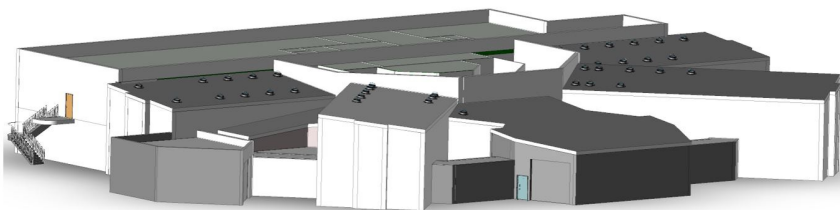


## Media Release

The existing custody suite in the city centre has long fallen short of the force's operational needs and current Home Office standards, with accommodation and facilities spread over multiple floors making it difficult to monitor detainees. Refurbishing the site was found to be a prohibitively expensive and impractical option, requiring an extended period of closure, and after extensive consideration a site on Radford Road was selected to replace it.

Designed to be fully accessible, the new state-of-the-art building will provide 50 modern cells in accordance with National Guidance, as well as a purpose built space for taking police photographs, fingerprints, and DNA samples. Meanwhile, the first floor will comprise a fully equipped office complex for staff use, allowing officers to return to their public facing duties quickly.



Proposed plans incorporate sustainable building solutions and the latest technology in a bid to reduce the environmental impact of the build and improve its long-term performance. Efficient infrastructure and associated services will allow Nottinghamshire Police to achieve savings on running costs, as well as ongoing maintenance and repairs.

Tom Shipman, Director of Gleeds in Nottingham with overall responsibility for the scheme, said: "Gleeds has a long standing relationship with Nottinghamshire Police and I am delighted that our previous work has been recognised through this appointment. The Old Gasworks has been vacant for a number of years and the site is ripe for redevelopment. Situated within minutes of Radford Road police station, the new facility will offer a far better environment for everyone who uses it and should also greatly increase efficiency – ultimately improving the service the force is able to provide to the public".

Following the approval of detailed plans, works on the new facility are expected to begin on site in 2020 with completion in 2021.

## Notes for editors

### Photography

Police and Crime Commissioner for Nottinghamshire, Paddy Tipping; Chief Constable Craig Guildford; Assistant Chief Constable Steve Cooper; Inspector Duncan Collins; Daniel Bohane, Senior Project Manager at Gleeds; Tom Smith, Senior Quantity Surveyor at Gleeds; Laurence Hunt, Quantity Surveyor at Gleeds; James Elliment, Senior Operations Manager at Willmott Dixon; Nick Heath, Director of Delivery at Willmott Dixon.

CGI of the proposed custody suite on Radford Road.

Gleeds ([www.gleeds.com](http://www.gleeds.com)) is an international property and construction consultancy with over 130 years' experience in the property and construction industry. With 1800 dedicated staff across six continents and 71 offices, Gleeds prides itself on being a global business that is structured to act and think locally.

Working with clients in almost every sector, Gleeds services the entire project lifecycle and categorises its offering into the following core areas: programme and project management, commercial and contract management, property and asset management and advisory.